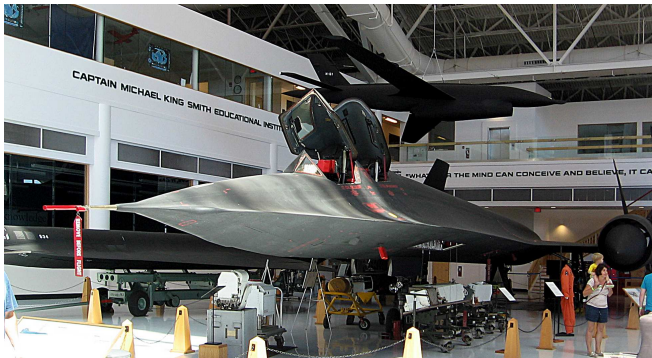


7/21, Fri: We spent yesterday with our friends in Eugene. Among other activities, I took a hike and Kathy visited a hairdresser. Today we drove to McMinnville and visited the Evergreen Aviation and Space Museum, home of Howard Hughes' "Spruce Goose" - the largest (although not the heaviest) airplane built before 2017. Among other objects on display is the SR-71 "Blackbird" spy plane.



7/22, Sat: Today we drove up the Oregon coast, from Otis (west of Salem) to Hammond (where the Columbia River empties into the Pacific). Particularly beautiful spots were Winema Beach, Cape Lookout State Park (photo), and Cape Meares SP. We've stopped for a couple of nights in Astoria, which claims to be "the first permanent US settlement west of the Rocky Mountains."

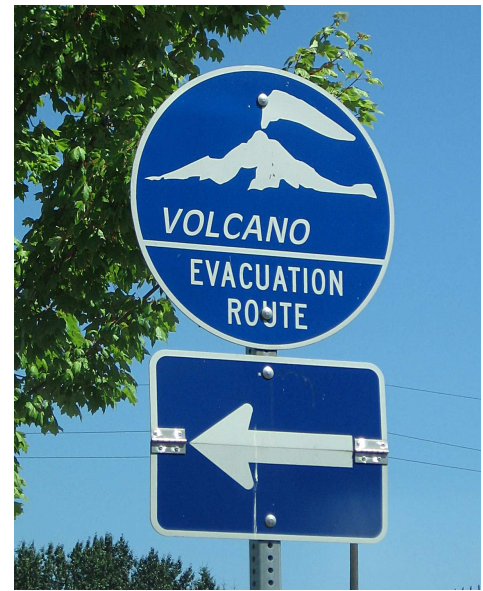




7/23, Sun: Astoria has a large number of coffeehouses and we had a nice breakfast in one while waiting for the morning fog to burn off. Then we drove to the "Astoria Column", a lighthouse-like structure (with 164 steps) topping the highest point in Astoria. Great views in all directions, especially of the 4-mile bridge over the Columbia River to the state of Washington. In the afternoon we rode the Astoria Trolley along the waterfront. Topped off the day with some Dungeness crab cakes.



7/24, Mon: Longview WA had a citizen who hated to see squirrels getting mashed while crossing the street near his home (another find from Atlas Obscura}. Tacoma is worried that their citizens will be caught by a volcanic eruption.





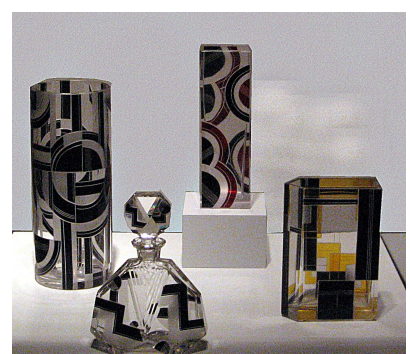
7/26, Weds: Yesterday we spent the afternoon with a college classmate of mine who I last saw in Aachen Germany in the summer of 1962. We met each others wives and did a lot of catching up. Today we went to the Tacoma Museum of Glass, and then on a walking tour of some nearby Dale Chihuly installations.



Muller Frères ca 1925-1929



Charles Schneider ca 1925-1928



attributed to Karel Palda ca 1927-1932

7/27, Thurs: Seattle has a troll under Astoria Road. He is eating a VW beetle he snatched off the overpass. I visited him this morning. Then I went to Gas Works Park where, from 1906 to 1938 over 45 million cubic feet of synthetic natural gas per day were made by distilling coal. The gas was used for household lighting and cooking. Then I met Kathy at the Chihuly Garden and Glass exhibit, with a spectacular display of his work.

